

RIB

9.5 Series



Smart Own

De Dubaï vers le monde

www.smartown.ae | info@smartown.ae | +971 4 4438970



Caractéristiques

Longueur hors tout* :

*sans moteur

9,7 m (31 pi 10 po)

Maître-bau :

3,17 m (10 pi 5 po)

Poids :

2,580 kg

Charge utile :

1 950 kg

Moteurs standard :

2 x hors-bord Yamaha 250 ch

Vitesse maximale :

50 nœuds

Puissance maximale autorisée :

2 x 450 ch

Capacité de carburant maximale :

746 l (197 gal US)

Nombre max. de passagers :

16 personnes

Compartiments hermétiques :

7

Tissus de tube de flottabilité :

DTEX Hypalon 1670

Matériaux de la coque et du pont :

Composite

Classification : (Approbation CE)

B

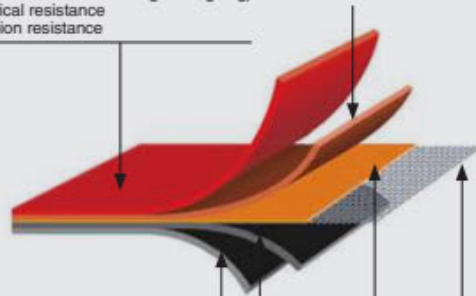
**HYPALON COLLAR

ASIS uses the finest quality material to manufacture and produce all of its products. Only Hypalon™ is used in the manufacture of the ASIS tube.

Outside CSM layer gives:

- > weather resistance - fading and ageing)
- > chemical resistance
- > abrasion resistance

Layer of Neoprene in between the CSM and the textile.



Inside Neoprene sheets give:

- > high gluability and reliable adhesion
- > air tightness (no air in the high textile)

High Tenacity Textile give:

- > basic mechanical properties (tensile and tear strengths)
- > dimensional stability

Page 1 / 2

Certificate number: 16098/CO BV
File number: FAB 2017/08
Product code: 9087H

This certificate is not valid when presented without the 1st attached schedule composed of 7 sections.

www.veristar.com

BUREAU VERITAS
Marine & Offshore

TYPE APPROVAL CERTIFICATE

This certificate is issued to:
PENNEL & FLIPO
MOUSCRON - BELGIUM

for the type of product:
PROOFED FABRICS FOR RESCUE BOAT
DRCA 886 Polyester High Tenacity 1670 class - 1500 deniers
Coated fabrics for professional, military and rescue boat

Requirements:
ISO15378:2000

This certificate is issued to attest that Bureau Veritas Marine & Offshore did undertake the relevant approval procedures for the product identified above which was found to comply with the relevant requirements mentioned above.

This certificate will expire on: 01 Jun 2022

For Bureau Veritas Marine & Offshore,
At BV ANTWERP, on 01 Jun 2017,
Nelle Appels

Nelle Appels

BUREAU VERITAS
PARIS 1828
INTERNATIONAL REGISTER

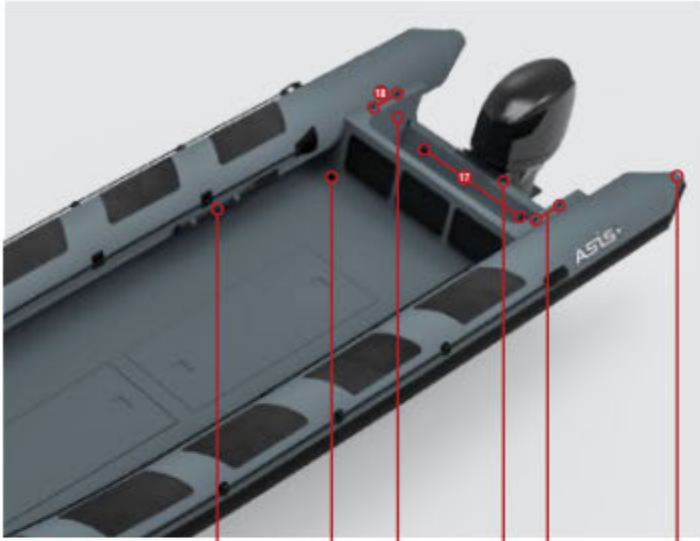
This certificate remains valid until the date stated above, unless cancelled or recalled, provided the conditions indicated in the subsequent page(s) are complied with and the product remains satisfactory in service. This certificate will not be valid if the applicant notifies any changes or modifications to the approved product, which have not been notified to, and agreed in writing with Bureau Veritas Marine & Offshore. Should the specified regulations or standards be amended during the validity of this certificate, the producting fabric is to be approved prior to being being placed on board vessels to which the approved regulations or standards apply. This certificate is issued within the scope of the General Conditions of Bureau Veritas Marine & Offshore available on the internet site www.veristar.com. Any Person not a party to the contract pursuant to which this document is delivered may not assert a claim against Bureau Veritas Marine & Offshore for any liability arising out of errors or omissions which may be contained in said document, or be aware of judgement, fault or negligence committed by personnel of the Society or of its Agents in establishment or issuance of this document, and in connection with any activities for which it may provide.

The electronic version is available at: http://www.veristar.com/veristarwebapp/ViewPublicPdf?com_id=16098/CO/BV
BV Mod. Act E ISO June 2017

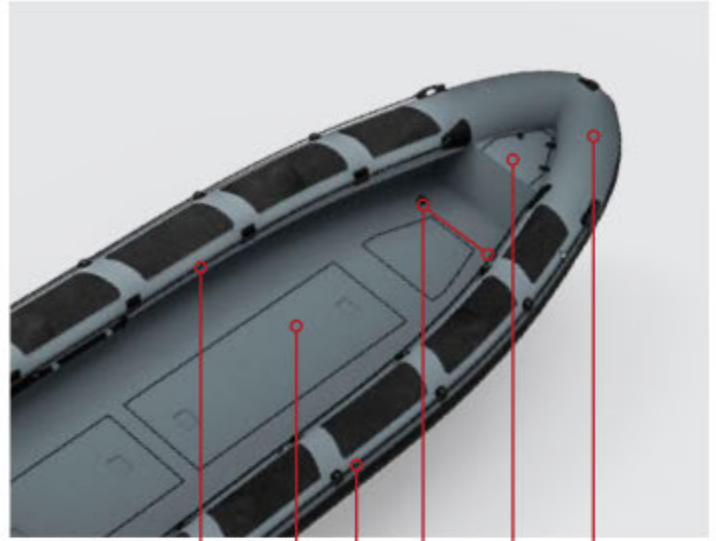
This certificate consists of 2 page(s)

RIB 9.5 Series

Équipement de série



16 15 13 8 18 14



10 4 9 17 5/7 3



#18-24 Note....

6 11 2 12

#	STANDARD EQUIPMENT
1	Heavy Duty Structure
2	Custom Color Fiberglass
3	Tube Material Heavy Duty Hypalon 1670 DTEX
4	Under-Deck Storage 3Nos
5	Anchor Locker
6	Bow U Bolt 1No. & Towing Rings 2Nos.
7	Stainless Steel Eye Nut Inside The Anchor Box
8	Stainless Steel Transom Strip
9	External Safety Rope Grab Line
10	Internal Safety Rope Grab Line
11	Large Profile All-Around Double or Triple Rubbing Strake
12	Moulded Handles 4Nos.

#	STANDARD EQUIPMENT
13	Engine Pit
14	Reinforced Cone Ends 2Nos.
15	Self Draining Deck
16	Paddles 2Nos.
17	S.S Heavy Duty Lifting Points (2Nos. on Front & 2Nos. on Back)
18	Stainless Steel Base Pin Connection for A Frame
	<ul style="list-style-type: none"> Stainless Steel 316L Fuel Tank with Gauge and Sender Air Pump Repair Kit Automatic Bilge Pumps 2Nos. with Float Switch Navigation and Anchor Light Switch Panel

RIB 9.5 Series

Certification CE



Direttiva Europea 2003/44/CE - Modulo Aa - "Examination report"
European Directive 2003/44/EC - Module Aa - "Examination report"
N. DIP034612WE/001

Allegato - Pagina 1/1
Enclosure - Page 1 of 1

ASIS 9.5 M

ASIS BOATS LLC.	JEBEL ALI - 61426 DUBAI - UNITED ARAB EMIRATES
------------------------	---

Lunghezza <i>Length</i>	(Lh)	9.27	(m)
Larghezza <i>Beam</i>	(Bh)	3.17	(m)
Altezza di costruzione <i>Depth</i>	(Ds)	1.25	(m)
Dislocamento <i>Displacement</i>	(mLDC)	3.26	(t)
Materiale dello scafo <i>Material of the hull</i>		TESSUTO GOMMATO RUBBER MATERIAL	
Propulsione <i>Propulsion</i>		a motore powered	
Comando timone <i>Steering control</i>		a distanza remote	
Numero dei motori installati <i>Number of engines</i>		-	
Tipo di motori installati <i>Type of engines</i>		-	
Potenza massima di esercizio <i>Maximum power</i>		-	kW
Tipo combustibile <i>Type of fuel</i>		-	
Numero massimo persone trasportabili <i>Maximum n° of persons permitted on board</i>		15	
Portata/carico massimo raccomandato dal costruttore (comprensiva delle persone), da riportare sulla "Targhetta del costruttore" <i>Manufacturer's maximum recommended load (including all persons), to be shown on "Builder's Plate"</i>		1500 kg (*)	Kg
Categoria di progettazione <i>Design category</i>		B	

Note <i>Notes</i>	<ul style="list-style-type: none">- Documentazione tecnica esaminata in forma completa il 17-12-2012.- L'examination report n° 2012/WE/01/346 dettaglia le Norme/Standards di riferimento applicabili.- Unità provvista di carena in PRFV.- (*) Per le unità munite di motore F.B., la portata massima dovrà comprendere anche la massa dei motori.- Il presente certificato sostituisce il precedente per la sola variazione del numero massimo delle persone trasportabili. - Examination of technical file completed on 17-12-2012.- Examination report n. 2012/WE/01/346 lists the relevant applicable Rules/Standards.- Hull bottom in FRP.- (*) For boats with outboard engines, maximum load shall include the engines' weight.- This certificate replaces the previous one for the variation of the maximum number on persons permitted on board only.
-----------------------------	---

Genova 17 Dicembre 2012
Genoa December 17, 2012

RINA
Via Corsica, 12 - 16128 Genova - Italia
Tel. +39 010 53851
Fax. +39 010 5351000

RIB 9.5 Series

Exemples de configurations

Transport



RIB 9.5 Series

Exemples de configurations

Militaire, antipiraterie



RIB 9.5 Series

Exemples de configurations

Opérations marines, sauvetage



RIB 9.5 Series



Smart Own

De Dubaï vers le monde

www.smartown.ae | info@smartown.ae | +971 4 4438970

