

RIB

8.0 Series



Smart Own

De Dubaï vers le monde

www.smartown.ae | info@smartown.ae | +971 4 4438970



Caractéristiques

Longueur hors tout* :

*sans moteur

8,2 m (26 pi 11 po)

Maître-bau :

2,55 m (8 pi 4 po)

Poids :

1 856 kg

Charge utile :

1 441 kg

Moteurs standard :

2 x hors-bord Yamaha 150 ch

Vitesse maximale :

50 nœuds

Puissance maximale autorisée :

2 x 250 ch

Capacité de carburant maximale :

455 l (120 gal US)

Nombre max. de passagers :

12 personnes

Compartiments hermétiques :

5

Tissus de tube de flottabilité : D

TEX Hypalon 1670

Matériaux de la coque et du pont :

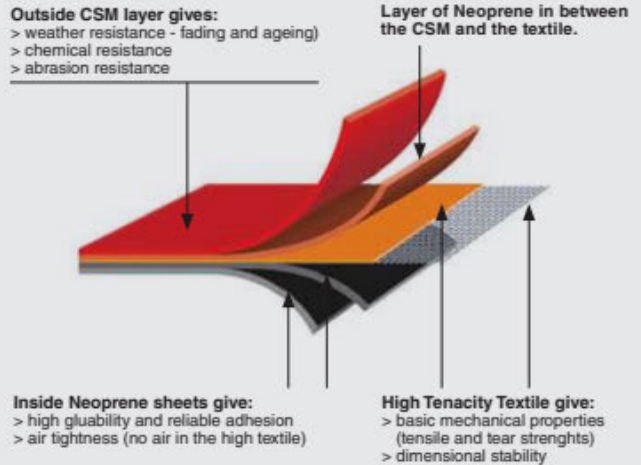
Composite

Classification : (Approbation CE)

B

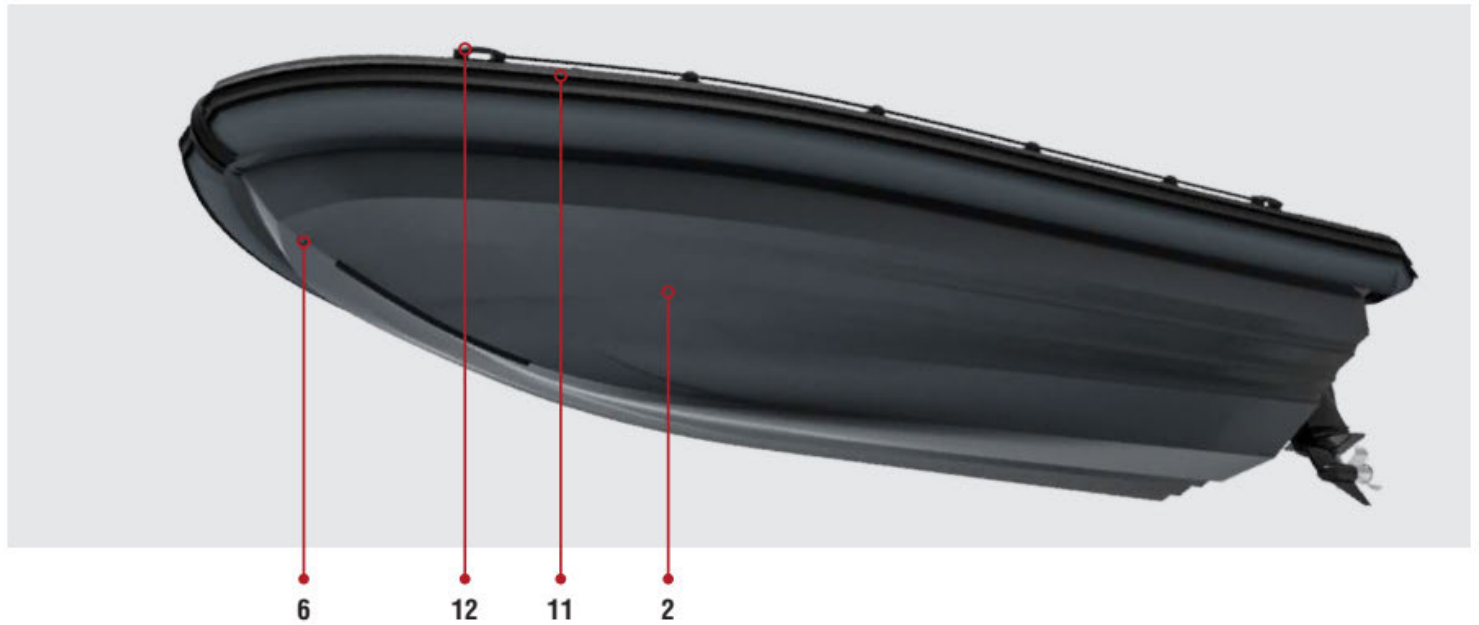
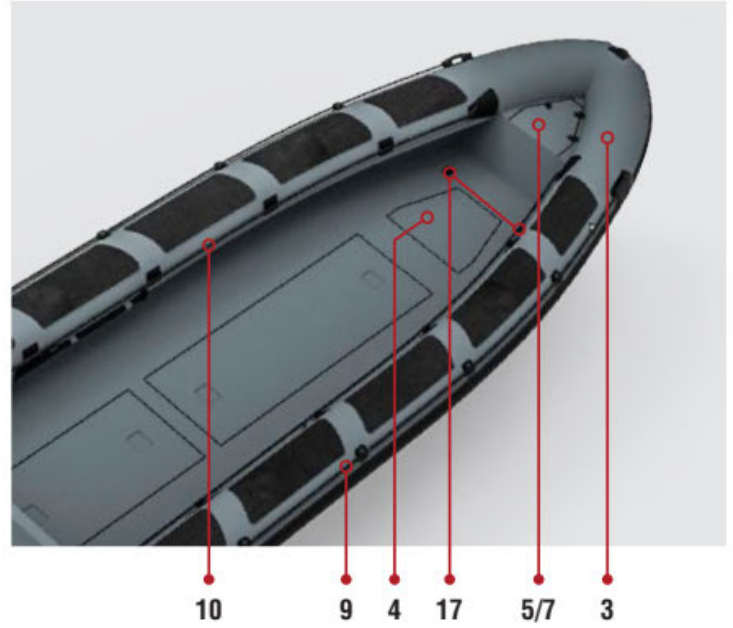
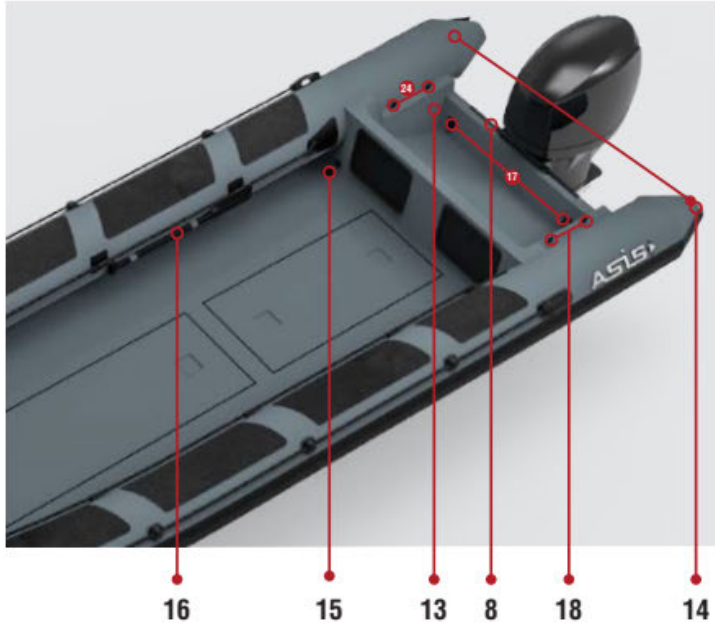
**HYPALON COLLAR

ASIS uses the finest quality material to manufacture and produce all of its products. Only Hypalon™ is used in the manufacture of the ASIS tube.



RIB 8.0 Series

Équipement de série



#	STANDARD EQUIPMENT
1	Heavy Duty Structure
2	Custom Color Fiberglass
3	Tube Material Heavy Duty Hypalon 1670 DTEX
4	Under-Deck Storage 3Nos
5	Anchor Locker
6	Bow U Bolt 1No. & Towing Rings 2Nos.
7	Stainless Steel Eye Nut Inside The Anchor Box
8	Stainless Steel Transom Strip
9	External Safety Rope Grab Line
10	Internal Safety Rope Grab Line
11	Large Profile All-Around Double or Triple Rubbing Strake
12	Moulded Handles 4Nos.

#	STANDARD EQUIPMENT
13	Engine Pit
14	Reinforced Cone Ends 2Nos. 2Nos.
15	Self Draining Deck
16	Paddles 2Nos.
17	S.S Heavy Duty Lifting Points (2Nos. on Front & 2Nos. on Back)
18	Stainless Steel Base Pin Connection for A Frame
	<ul style="list-style-type: none"> Stainless Steel 316L Fuel Tank with Gauge and Sender Air Pump Repair Kit Automatic Bilge Pumps 2Nos. with Float Switch Navigation and Anchor Light Switch Panel

RIB 8.0 Series

Certification CE



EXAMINATION REPORT STABILITY & BUOYANCY

CERTIFICATE NUMBER -06-10-0913-

Annex I

Main particulars of Certified product

Lh: Length of hull (ISO 8666) : 7.70 [m]
Bh: Beam of hull (ISO 8666) : 2.53 [m]
T: Maximum draft fully loaded : 0.2 [m] without outboard
Δ: Displacement fully loaded : 3352 [kg]
P: Maximum engine power : 2 x 183.5 [kw]
Maximum engine weight : 600 [kg]
No. of compartments : 5

Tank capacities

Total fuel tank capacity : 250/655 [ltr]
Total fresh water tank capacity : - [ltr]
Total black water tank capacity : - [ltr]

The Certified product has been assessed on basis of the following

Documentation as in ECB file: ASD-0545/ MAC-0545
Technical Construction File, kept by Applicant.
Final reports: MAC-0545 date 12-04-2001; 170322 modifications ASD-0545

Information on builders plate of Certified product

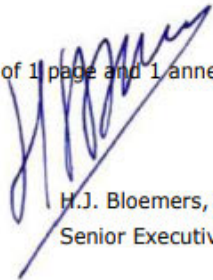
Manufacturers name and address : See page 1
Marking: CE
Design category: B
Recommended maximum nr. of persons : 15
Recommended maximum load: 2000 kg (persons, stores, outboard engines)

List of Essential requirements and related relevant parts of the Technical Documentation (reference to relevant articles in Annex IA & IC of the Directive)	remarks
General requirements (2)	EN ISO 8666:2002
Stability and freeboard (3.2)	EN ISO 6185-3:2014
Buoyancy and floatation (3.3)	EN ISO 6185-3:2014 EN ISO 14946:2001

This certificate consists of 1 page and 1 annex

For ECB Nederland,

Signature
name
function


H.J. Bloemers, B. Eng
Senior Executive



ECB Nederland www.ecb.nl +31(0)299 323123 info@ecb.nl

RIB 8.0 Series

Exemples de configurations

Transport



RIB 8.0 Series

Exemples de configurations

Forces de l'ordre



RIB 8.0 Series

Exemples de configurations

Opérations côtières militaires



RIB 8.0 Series



Smart Own

De Dubaï vers le monde

www.smartown.ae | info@smartown.ae | +971 4 4438970

