

# RIB 12 Series



*Smart Own*

**Do Dubai para o Mundo**

[www.smartown.ae](http://www.smartown.ae) | [info@smartown.ae](mailto:info@smartown.ae) | +971 4 4438970



# Características

## Comprimento Total:

motores não incluídos  
12,2 m (40 ft)

## Largura Total:

3,75 m (12 ft 4 in)

## Peso do Barco Semirrigido:

5.544 kg

## Carga Útil:

2.742 kg

## Motores de Série:

Yamaha, de popa, 2x350 CV

## Velocidade Máxima:

50 nós

## Potência Máxima Permitida:

2x450 CV

## Depósito de Combustível:

1.130 l (298 US gal)

## Lotação máxima:

22 pessoas

## Compartimentos estanques:

9

## Material dos Tubos de Flutuação:

Hypalon 1670 DTEX

## Material do Casco e Convés: PRFV

## Classe: (Aprovação CE)

B

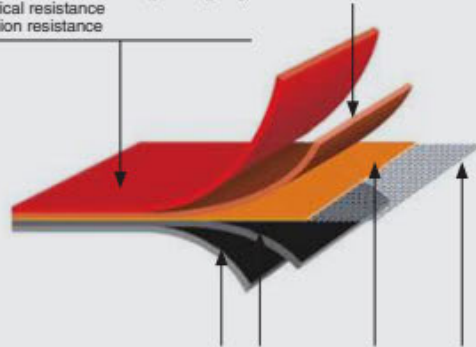
## \*\*HYPALON COLLAR

ASIS uses the finest quality material to manufacture and produce all of its products. Only Hypalon™ is used in the manufacture of the ASIS tube.

### Outside CSM layer gives:

- > weather resistance - fading and ageing)
- > chemical resistance
- > abrasion resistance

### Layer of Neoprene in between the CSM and the textile.



### Inside Neoprene sheets give:

- > high gluability and reliable adhesion
- > air tightness (no air in the high textile)

### High Tenacity Textile give:

- > basic mechanical properties (tensile and tear strengths)
- > dimensional stability

Page 1 / 2

 Marine & Offshore

Certificate number: 16098/CO BV  
File number: FAB 2017/08  
Product code: 9087H

This certificate is not valid when presented without the list attached schedule composed of 7 sections.

www.veritas.com

### TYPE APPROVAL CERTIFICATE

This certificate is issued to:  
**PENNEL & FLIPO**  
MOUSCRON - BELGIUM

for the type of product:  
**PROOFED FABRICS FOR RESCUE BOAT**  
DRCA 886 Polyester High Tenacity 1670 class - 1500 deniers  
Coated fabrics for professional, military and rescue boat

Requirements:  
ISO15378:2000

This certificate is issued to attest that Bureau Veritas Marine & Offshore did undertake the relevant approval procedures for the product identified above which was found to comply with the relevant requirements mentioned above.

This certificate will expire on: 01 Jun 2022

For Bureau Veritas Marine & Offshore,  
At BV ANTWERP, on 01 Jun 2017,  
Nelle Appels

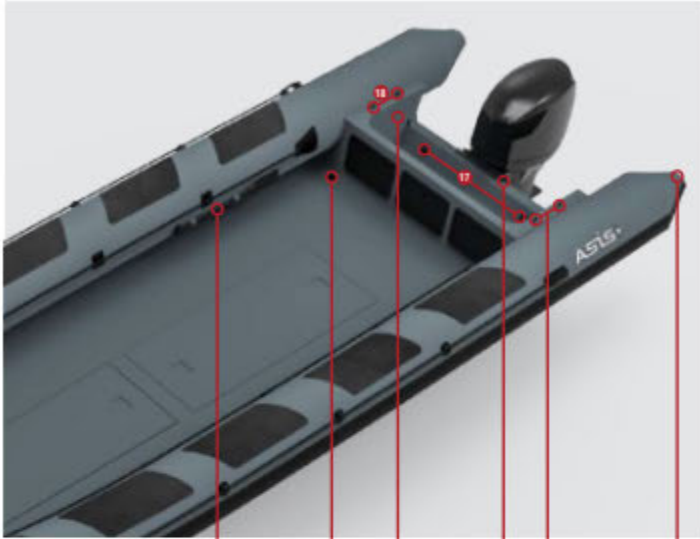
This certificate remains valid until the date stated above, unless cancelled or recalled, provided the conditions indicated in the subsequent page(s) are complied with and the product remains satisfactory in service. This certificate will not be valid if the applicant notifies any changes or modifications to the approved product, which have not been notified to, and agreed in writing with Bureau Veritas Marine & Offshore. Should the specified regulations or standards be amended during the validity of this certificate, the producting holder is to be approved prior to being being placed on board vessels to which the approved regulations or standards apply. This certificate is issued within the scope of the General Conditions of Bureau Veritas Marine & Offshore available on the internet site www.veritas.com. Any Person not a party to the contract pursuant to which this document is delivered may not assert a claim against Bureau Veritas Marine & Offshore for any liability arising out of errors or omissions which may be contained in said document, or be aware of judgement, fault or negligence committed by personnel of the Society or its Agents in establishment or issuance of this document, and in connection with any activities for which it may provide.

The electronic version is available at: [http://www.veritas.com/veritas/bvgp/ViewPublicPdf?com\\_pag/161-3ag/0newr](http://www.veritas.com/veritas/bvgp/ViewPublicPdf?com_pag/161-3ag/0newr)  
BV MDG, Act E ISO June 2007

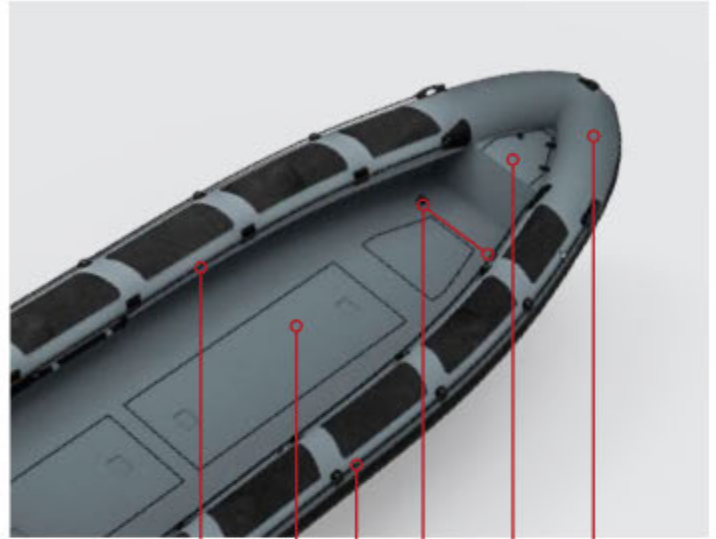
This certificate consists of 2 page(s)

RIB 12 Series

# Equipamento de Série



16 15 13 8 18 14



10 4 9 17 5/7 3



#18-24 Note....

6 11 2 12

#	STANDARD EQUIPMENT
1	Heavy Duty Structure
2	Custom Color Fiberglass
3	Tube Material Heavy Duty Hypalon 1670 DTEX
4	Under-Deck Storage 3Nos
5	Anchor Locker
6	Bow U Bolt 1No. & Towing Rings 2Nos.
7	Stainless Steel Eye Nut Inside The Anchor Box
8	Stainless Steel Transom Strip
9	External Safety Rope Grab Line
10	Internal Safety Rope Grab Line
11	Large Profile All-Around Double or Triple Rubbing Strake
12	Moulded Handles 4Nos.

#	STANDARD EQUIPMENT
13	Engine Pit
14	Reinforced Cone Ends 2Nos.
15	Self Draining Deck
16	Paddles 2Nos.
17	S.S Heavy Duty Lifting Points (2Nos. on Front & 2Nos. on Back)
18	Stainless Steel Base Pin Connection for A Frame
	• Stainless Steel 316L Fuel Tank with Gauge and Sender
	• Air Pump
	• Repair Kit
	• Automatic Bilge Pumps 2Nos. with Float Switch
	• Navigation and Anchor Light
	• Switch Panel

RIB 12 Series

# Certificação CE

Job Id: **341.3-000633-1**  
Report No: **RCDA100001KT**

## APPENDIX

The product is found to comply with the following product information

Type designation:	<b>ASIS Professional 12 m RHIB</b>
Type of craft:	RIB
Model code*:	AE-SOLC120
Length of hull (Lh), m:	10.79
Beam of hull (Bh), m:	3.77
Draft (sailing boats), m:	

\*First characters of the WIN code.

Design category:	B
Maximum number of persons, CL:	15
Maximum engine power, prop. shaft, kW:	782.98
Maximum load (m <sub>MTL</sub> ), kg:	1915
Maximum load as stated on Builder's Plate, kg: (Including outboard engine)	1915

Based on the following documentation  
Test report(s):

NPS Job ID 341.3-000633-1 dated 2019-02-22



# Exemplos de Configuração

Transporte



RIB 12 Series

# Exemplos de Configuração

Militar, Combate à pirataria



RIB 12 Series





*Smart Own*

**Do Dubai para o Mundo**

[www.smartown.ae](http://www.smartown.ae) | [info@smartown.ae](mailto:info@smartown.ae) | +971 4 4438970

