

RIB 12 Series



Smart Own

De Dubai para el Mundo

www.smartown.ae | info@smartown.ae | +971 4 4438970



Características

Lonitud total:
"sin motores"
40 pies (12.2 m)

Tamaño Total de la viga:
12 pies 4 pulgadas (3.75 m)

Peso de la nave:
5,544 kg

Carga útil:
2,742 kg

Motores estándar:
Yamaha Outboard 2x350 HP

Velocidad máxima:
50 nudos

Máxima potencia permitida:
2x450 HP

Máxima capacidad dde combustible:
298 US gal (1,130 l)

Máx. pasajeros:
22 personas

Compartimentos herméticos:
9

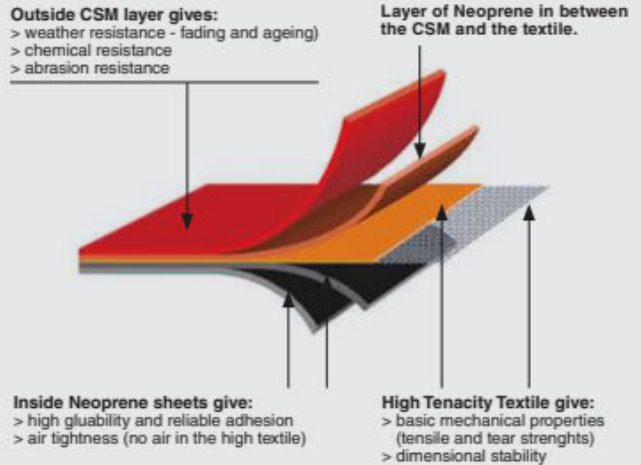
Tejidos para tubos de flotabilidad:
Hypalon 1670 DTEX

Materiales del casco y la cubierta:
GRP

Clasificación: (Certificación CE)
B

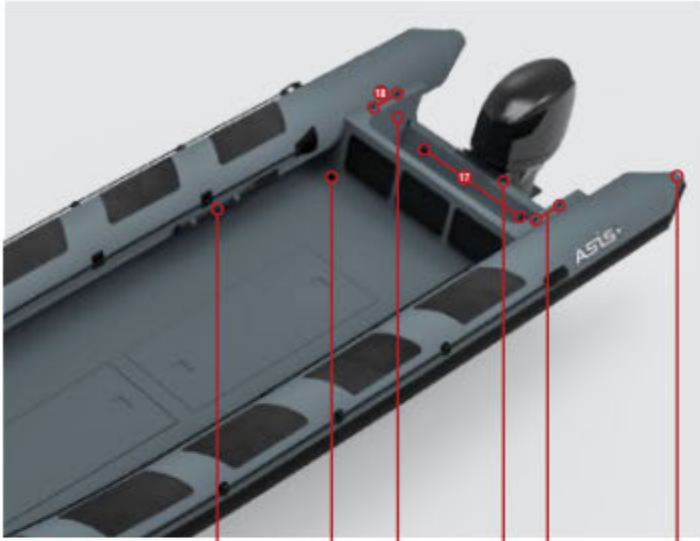
**HYPALON COLLAR

ASIS uses the finest quality material to manufacture and produce all of its products. Only Hypalon™ is used in the manufacture of the ASIS tube.

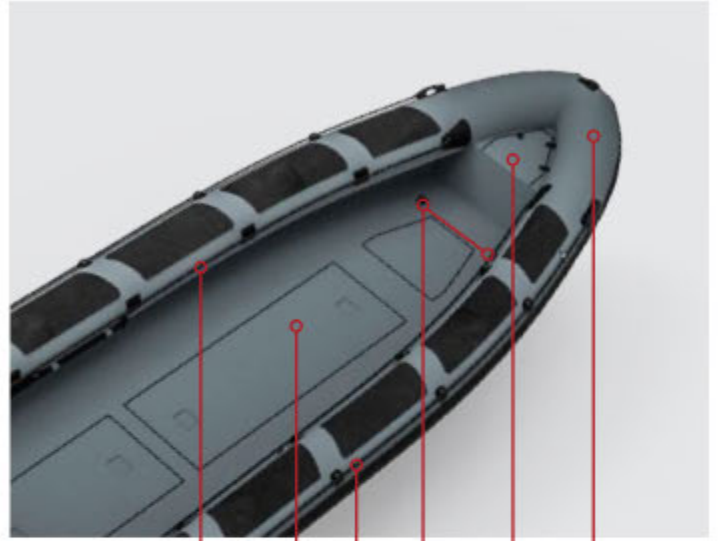


RIB 12 Series

Equipamiento estándar



16 15 13 8 18 14



10 4 9 17 5/7 3



#18-24 Note....

6 11 2 12

#	STANDARD EQUIPMENT
1	Heavy Duty Structure
2	Custom Color Fiberglass
3	Tube Material Heavy Duty Hypalon 1670 DTEX
4	Under-Deck Storage 3Nos
5	Anchor Locker
6	Bow U Bolt 1No. & Towing Rings 2Nos.
7	Stainless Steel Eye Nut Inside The Anchor Box
8	Stainless Steel Transom Strip
9	External Safety Rope Grab Line
10	Internal Safety Rope Grab Line
11	Large Profile All-Around Double or Triple Rubbing Strake
12	Moulded Handles 4Nos.

#	STANDARD EQUIPMENT
13	Engine Pit
14	Reinforced Cone Ends 2Nos.
15	Self Draining Deck
16	Paddles 2Nos.
17	S.S Heavy Duty Lifting Points (2Nos. on Front & 2Nos. on Back)
18	Stainless Steel Base Pin Connection for A Frame
	<ul style="list-style-type: none"> Stainless Steel 316L Fuel Tank with Gauge and Sender Air Pump Repair Kit Automatic Bilge Pumps 2Nos. with Float Switch Navigation and Anchor Light Switch Panel

RIB 12 Series

Certificación CE

Job Id: **341.3-000633-1**
Report No: **RCDA100001KT**

APPENDIX

The product is found to comply with the following product information

Type designation:	ASIS Professional 12 m RHIB
Type of craft:	RIB
Model code*:	AE-SOLC120
Length of hull (Lh), m:	10.79
Beam of hull (Bh), m:	3.77
Draft (sailing boats), m:	

*First characters of the WIN code.

Design category:	B
Maximum number of persons, CL:	15
Maximum engine power, prop. shaft, kW:	782.98
Maximum load (m _{MTL}), kg:	1915
Maximum load as stated on Builder's Plate, kg: (Including outboard engine)	1915

Based on the following documentation
Test report(s):

NPS Job ID 341.3-000633-1 dated 2019-02-22

Ejemplos de Configuración

Transportación



RIB 12 Series

Ejemplos de Configuración

Militar, antipiratas



RIB 12 Series



Smart Own

De Dubai para el Mundo

www.smartown.ae | info@smartown.ae | +971 4 4438970

