

# RIB

## 8.0 Series



*Smart Own*

**From Dubai to the World**

[www.smartown.ae](http://www.smartown.ae) | [info@smartown.ae](mailto:info@smartown.ae) | +971 4 4438970



# Characteristics

## Length Overall:

without engines  
26 ft 11 in (8.2 m)

## Beam Overall:

8 ft 4 in (2.55 m)

## Lightship Weight:

1,856 kg

## Payload:

1,441 kg

## Standard Engines:

Yamaha Outboard 2x150 HP

## Max Speed:

50 knots

## Max Power Allowed:

2x250 HP

## Max Fuel Capacity:

120 US gal (455 l)

## Max No. of Pax:

12 persons

## Airtight Compartments:

5

## Buoyancy Tube Fabrics:

Hypalon 1670 DTEX

## Hull and Deck Materials:

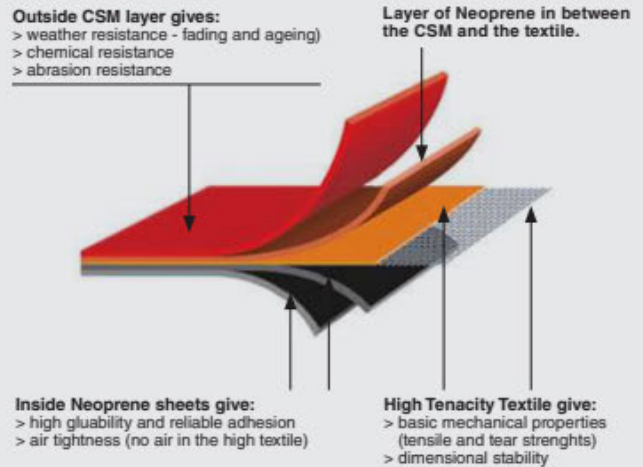
GRP

## Classification: (CE Approval)

B

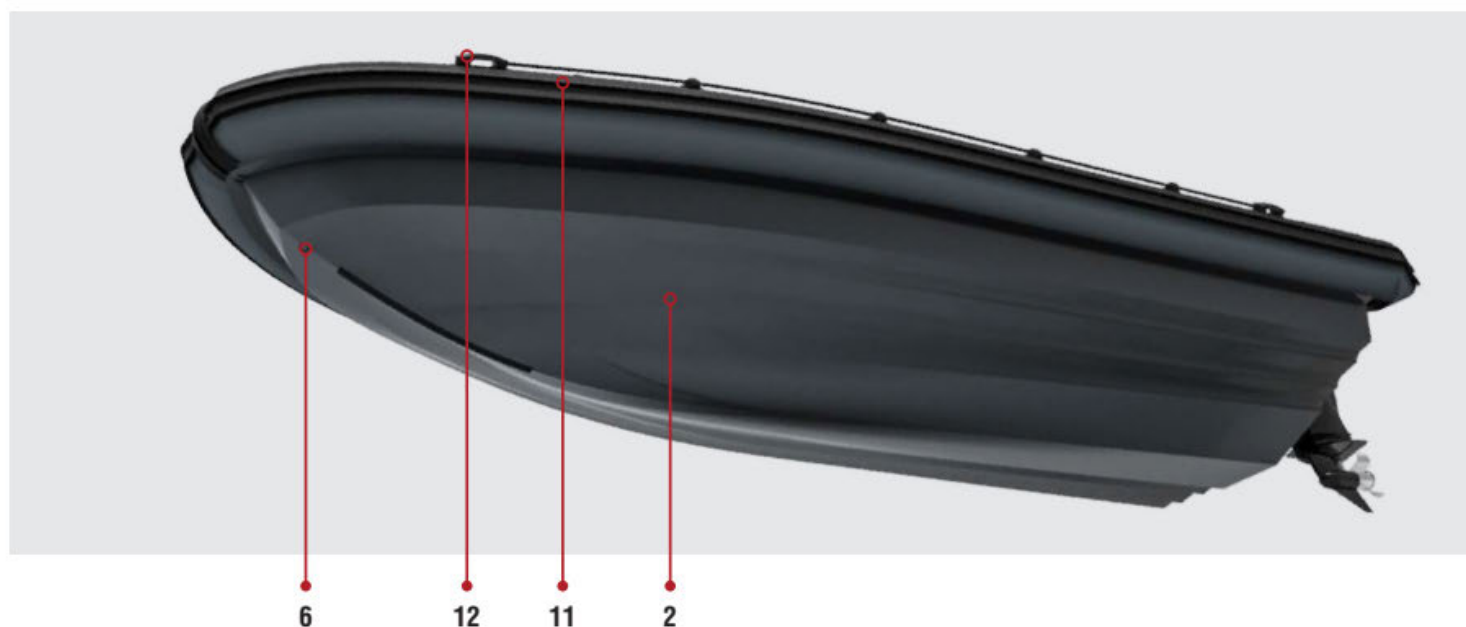
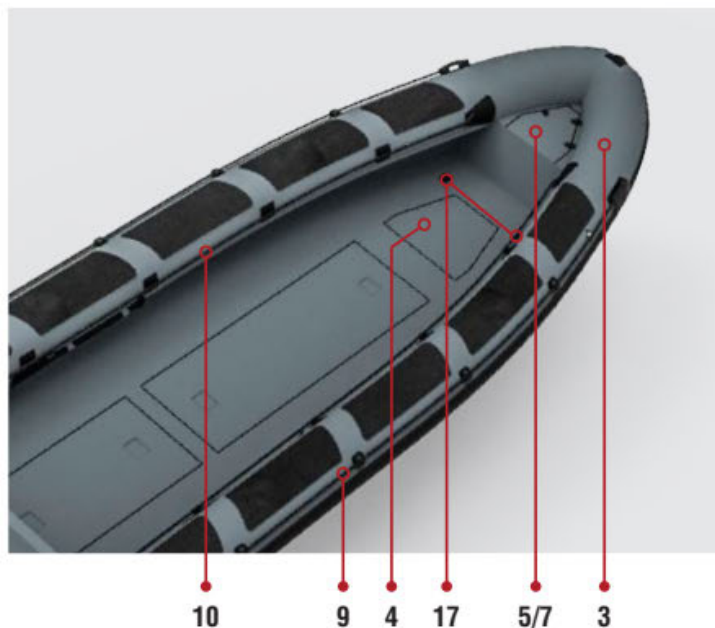
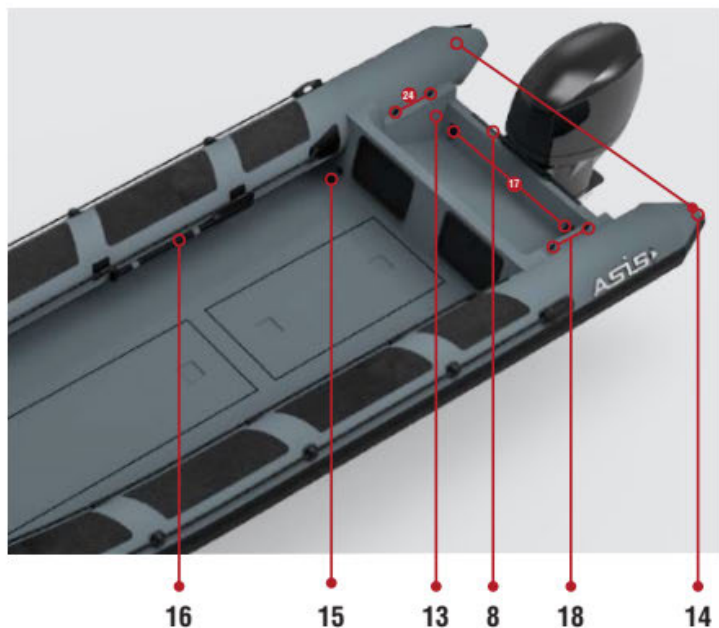
## \*\*HYPALON COLLAR

ASIS uses the finest quality material to manufacture and produce all of its products. Only Hypalon™ is used in the manufacture of the ASIS tube.



RIB 8.0 Series

# Standard Equipment



#	STANDARD EQUIPMENT
1	Heavy Duty Structure
2	Custom Color Fiberglass
3	Tube Material Heavy Duty Hypalon 1670 DTEX
4	Under-Deck Storage 3Nos
5	Anchor Locker
6	Bow U Bolt 1No. & Towing Rings 2Nos.
7	Stainless Steel Eye Nut Inside The Anchor Box
8	Stainless Steel Transom Strip
9	External Safety Rope Grab Line
10	Internal Safety Rope Grab Line
11	Large Profile All-Around Double or Triple Rubbing Strake
12	Moulded Handles 4Nos.

#	STANDARD EQUIPMENT
13	Engine Pit
14	Reinforced Cone Ends 2Nos. 2Nos.
15	Self Draining Deck
16	Paddles 2Nos.
17	S.S Heavy Duty Lifting Points (2Nos. on Front & 2Nos. on Back)
18	Stainless Steel Base Pin Connection for A Frame
	<ul style="list-style-type: none"> <li>• Stainless Steel 316L Fuel Tank with Gauge and Sender</li> <li>• Air Pump</li> <li>• Repair Kit</li> <li>• Automatic Bilge Pumps 2Nos. with Float Switch</li> <li>• Navigation and Anchor Light</li> <li>• Switch Panel</li> </ul>

RIB 8.0 Series

# CE Certification



## EXAMINATION REPORT STABILITY & BUOYANCY

CERTIFICATE NUMBER -06-10-0913-

### Annex I

#### Main particulars of Certified product

Lh: Length of hull (ISO 8666) : 7.70 [m]  
Bh: Beam of hull (ISO 8666) : 2.53 [m]  
T: Maximum draft fully loaded : 0.2 [m] without outboard  
Δ: Displacement fully loaded : 3352 [kg]  
P: Maximum engine power : 2 x 183.5 [kw]  
Maximum engine weight : 600 [kg]  
No. of compartments : 5

#### Tank capacities

Total fuel tank capacity : 250/655 [ltr]  
Total fresh water tank capacity : - [ltr]  
Total black water tank capacity : - [ltr]

#### The Certified product has been assessed on basis of the following

Documentation as in ECB file: ASD-0545/ MAC-0545  
Technical Construction File, kept by Applicant.  
Final reports: MAC-0545 date 12-04-2001; 170322 modifications ASD-0545

#### Information on builders plate of Certified product

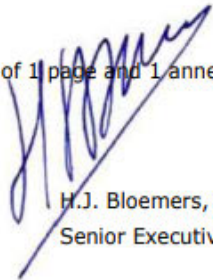
Manufacturers name and address : See page 1  
Marking: CE  
Design category: B  
Recommended maximum nr. of persons : 15  
Recommended maximum load: 2000 kg (persons, stores, outboard engines)

List of Essential requirements and related relevant parts of the Technical Documentation (reference to relevant articles in Annex IA & IC of the Directive)	remarks
<b>General requirements (2)</b>	<b>EN ISO 8666:2002</b>
Stability and freeboard (3.2)	EN ISO 6185-3:2014
Buoyancy and floatation (3.3)	EN ISO 6185-3:2014 EN ISO 14946:2001

This certificate consists of 1 page and 1 annex

For ECB Nederland,

Signature  
name  
function

  
H.J. Bloemers, B. Eng  
Senior Executive



ECB Nederland [www.ecb.nl](http://www.ecb.nl) +31(0)299 323123 [info@ecb.nl](mailto:info@ecb.nl)

RIB 8.0 Series

# Configuration Samples

## Transporter



RIB 8.0 Series

# Configuration Samples

Law Enforcement



RIB 8.0 Series

# Configuration Samples

Military Riverine



RIB 8.0 Series



*Smart Own*

**From Dubai to the World**

[www.smartown.ae](http://www.smartown.ae) | [info@smartown.ae](mailto:info@smartown.ae) | +971 4 4438970

